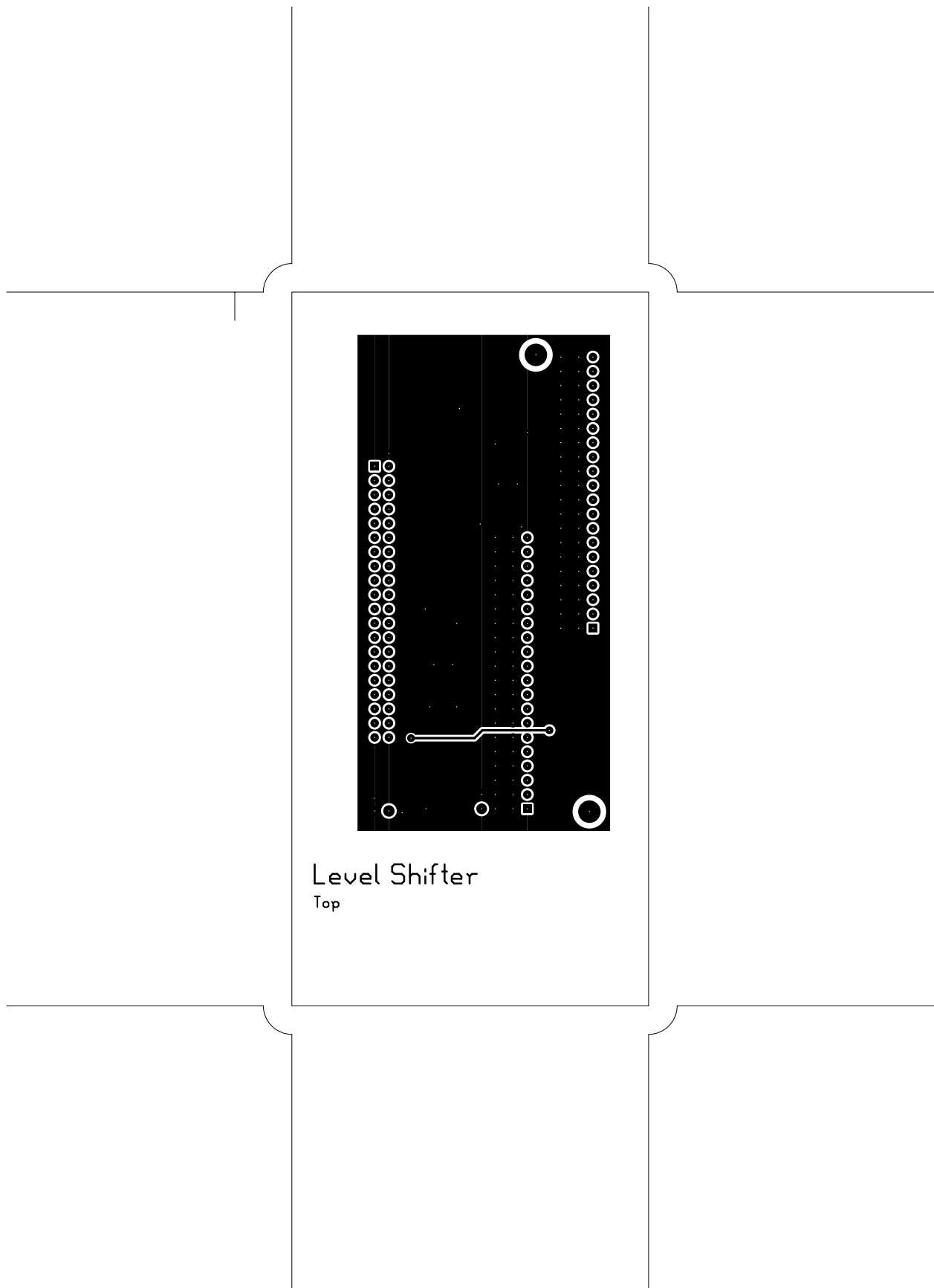
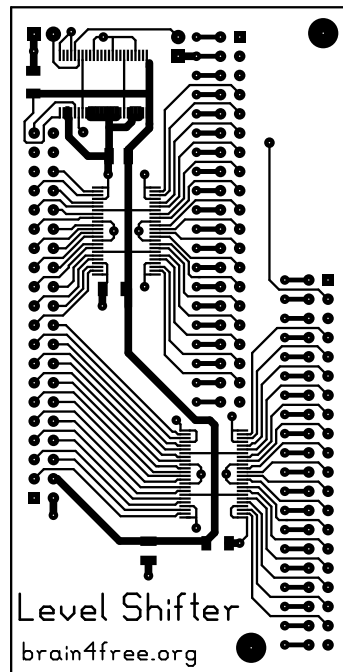
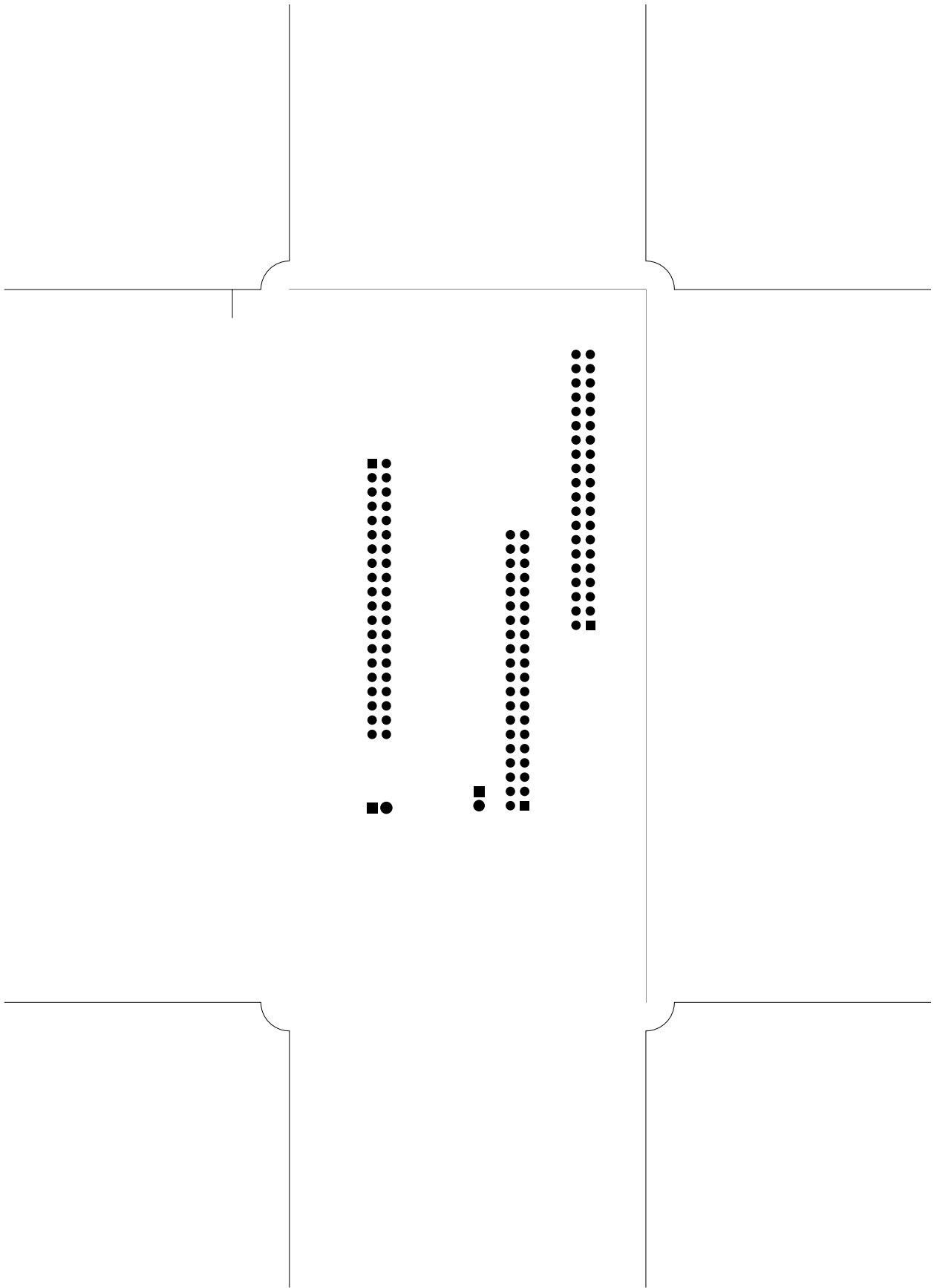


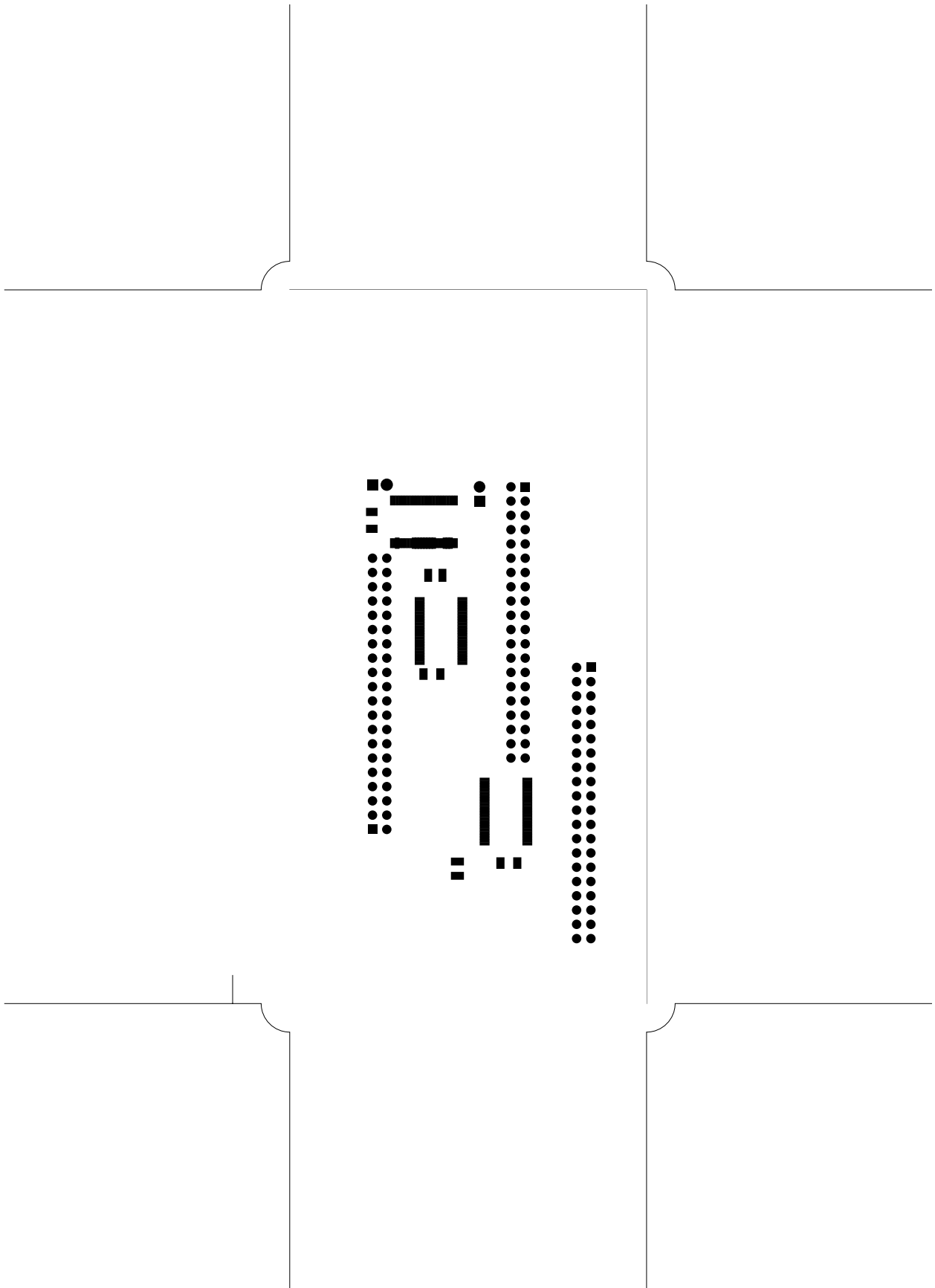
2. component
3. solder
4. componentmask
5. soldermask
6. plated-drill
7. topsilk
8. bottomsilk
9. bottompaste
10. topassembly
11. bottomassembly
12. fab

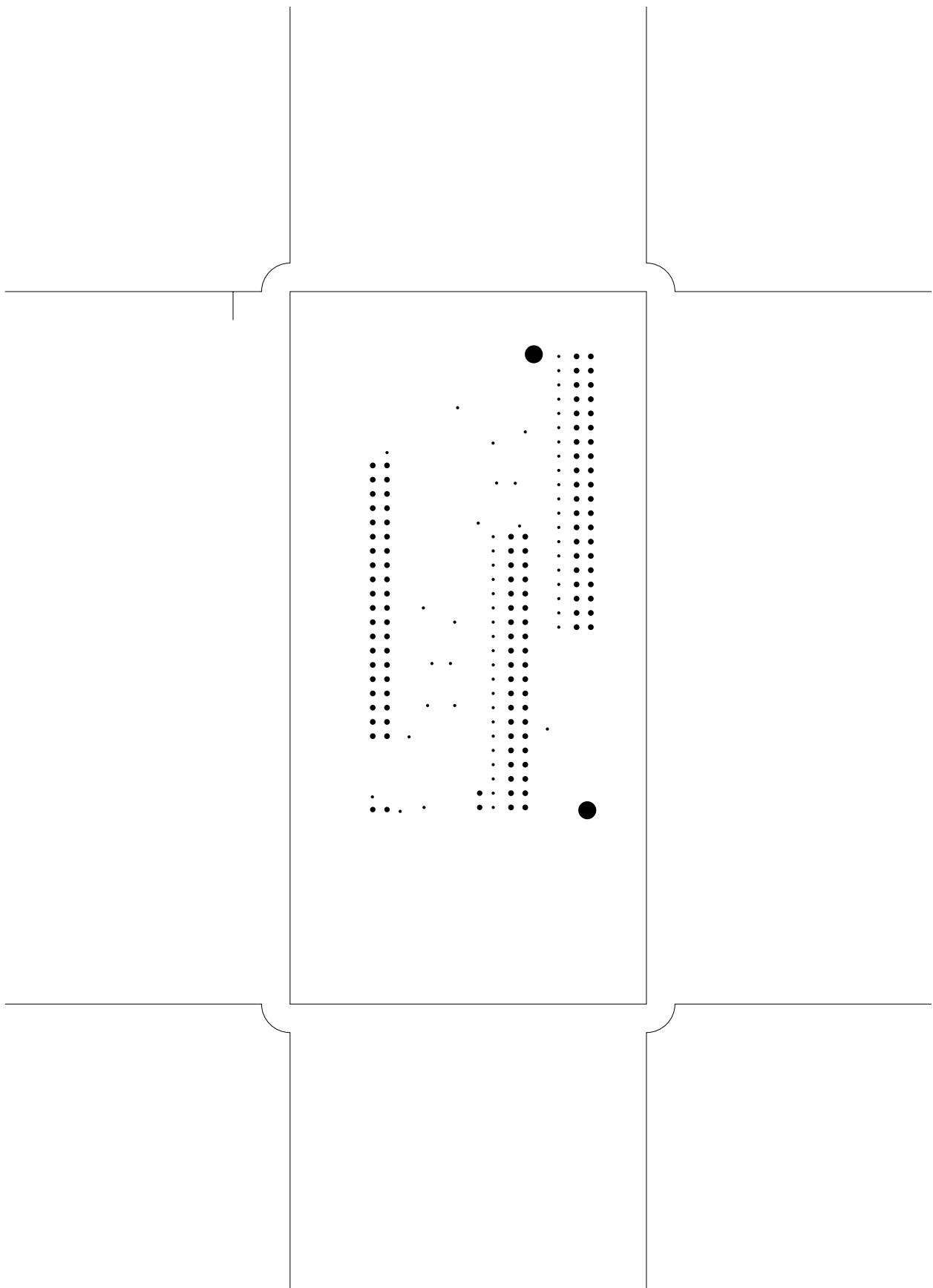


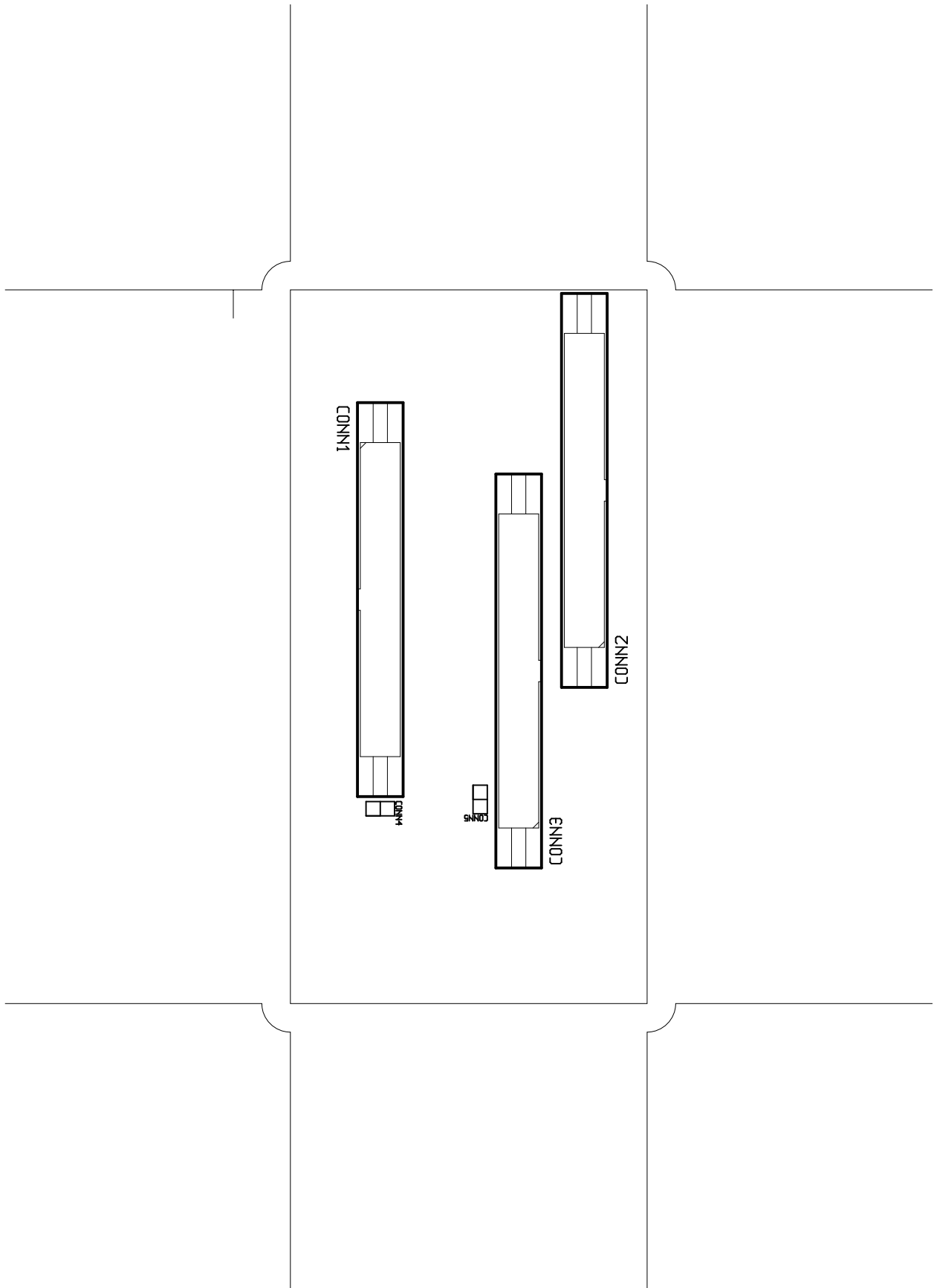


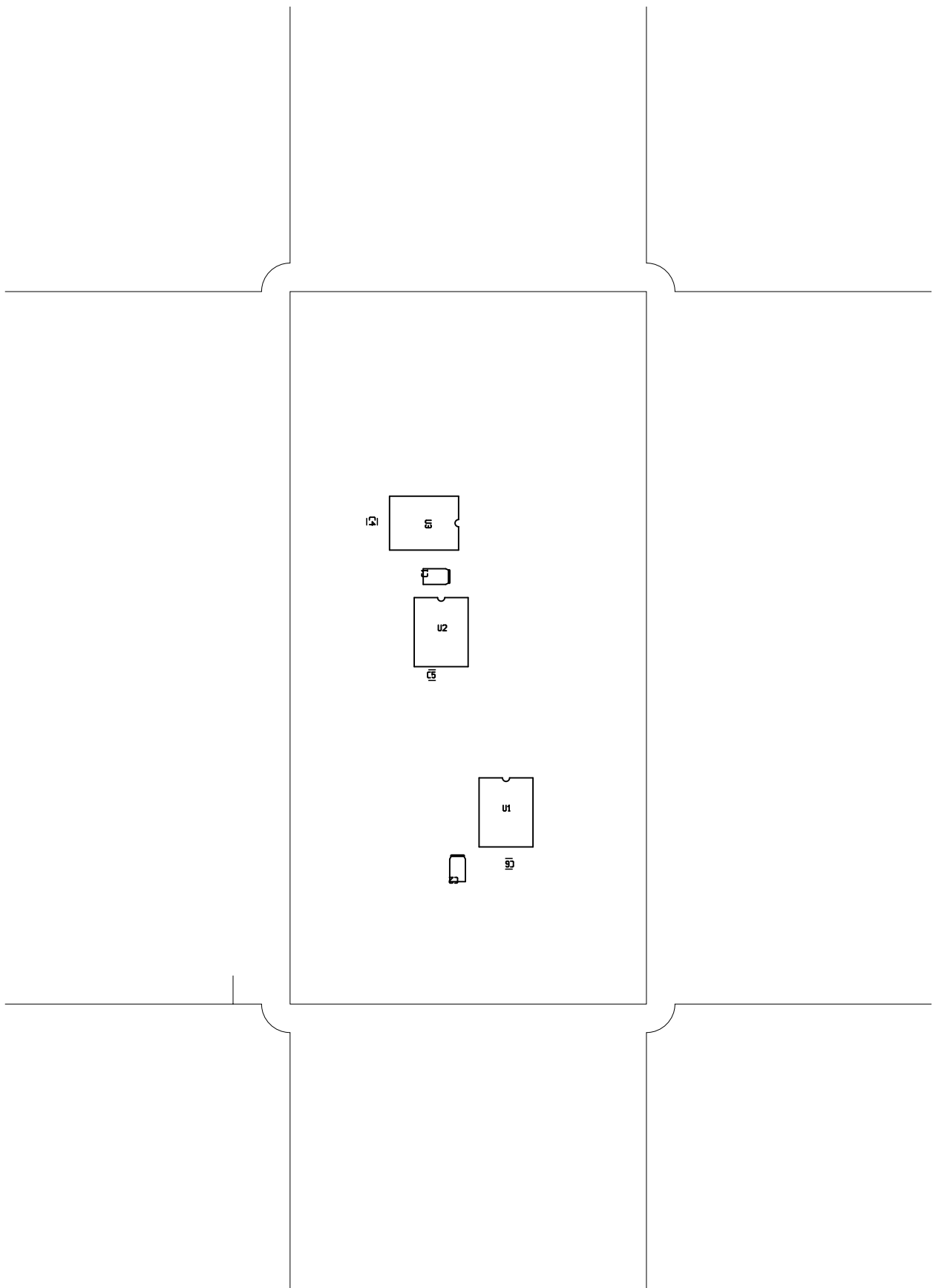
Bottom

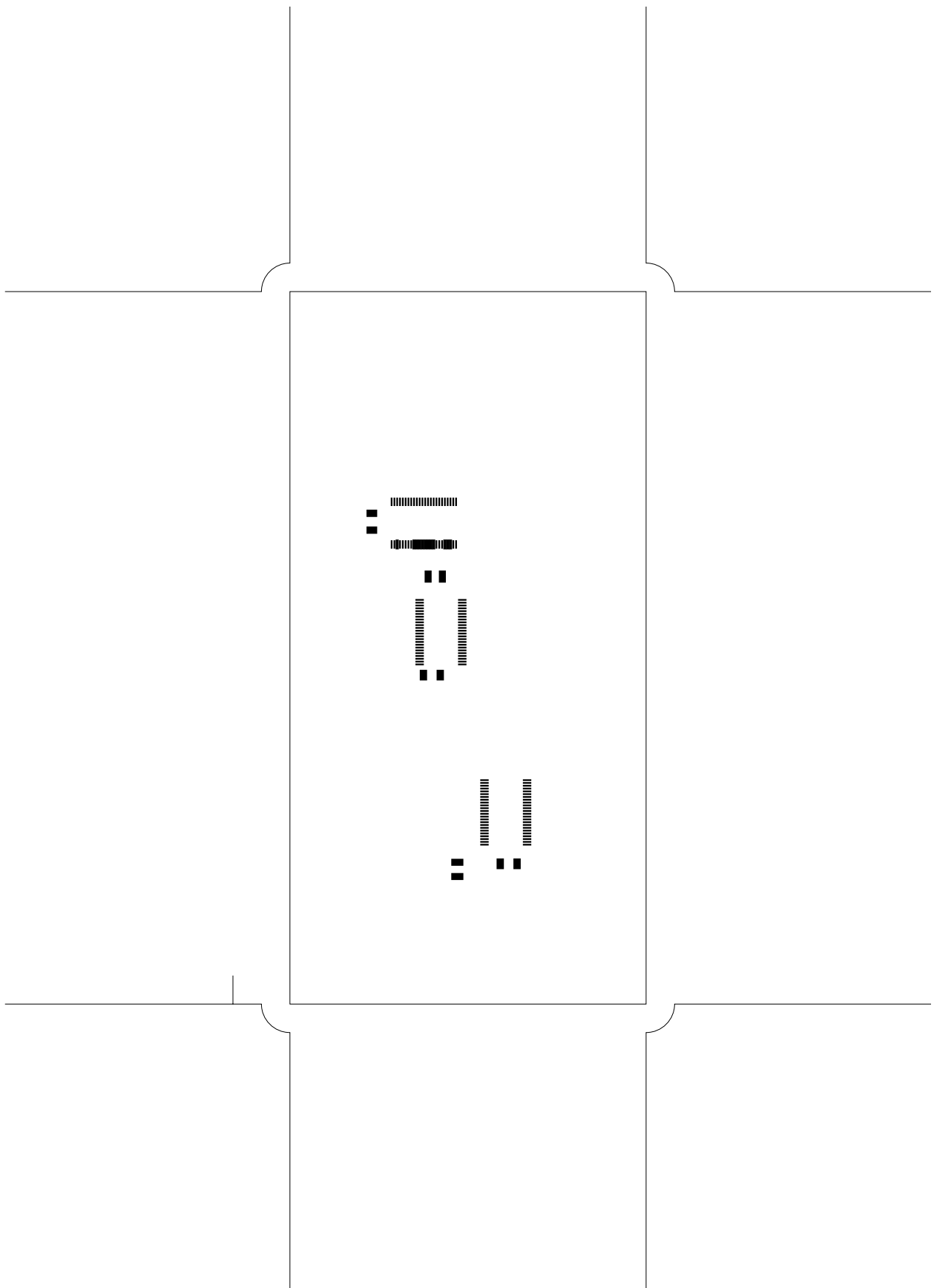


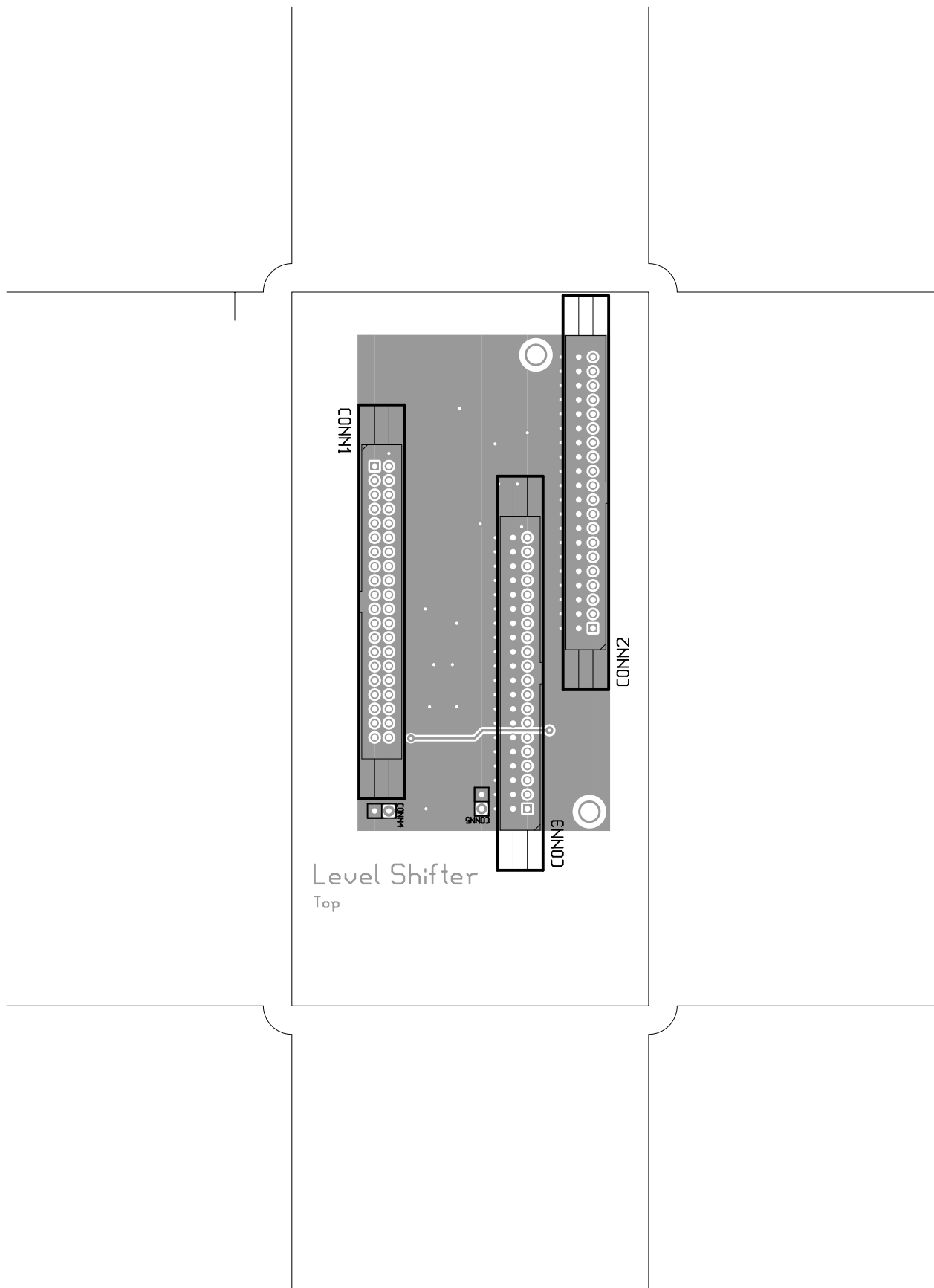


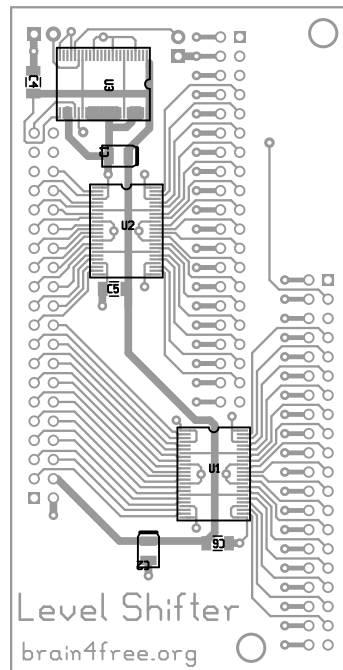












Bottom

There are 4 different drill sizes used in this layout, 185 holes total

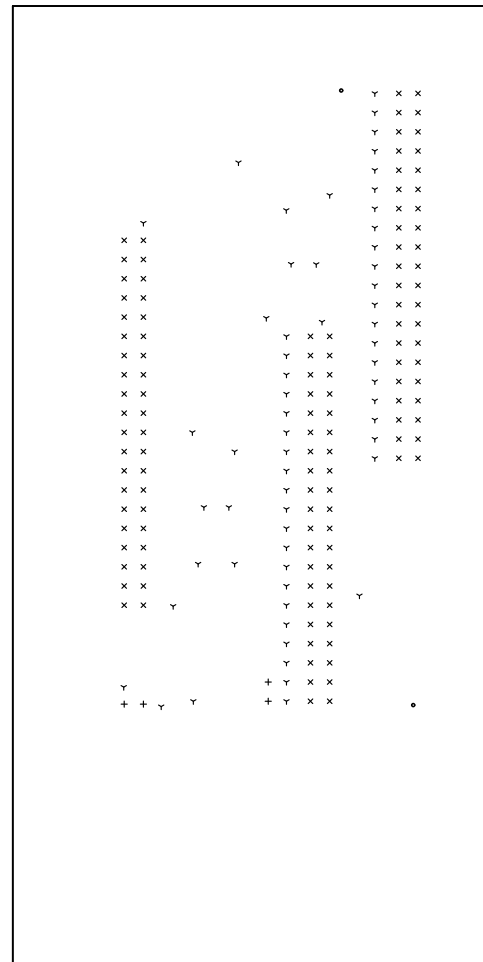
Symbol	Diam. (Inch)	Count	Plated?
Y	<u>0.022</u>	<u>59</u>	<u>YES</u>
+	<u>0.038</u>	<u>4</u>	<u>YES</u>
x	<u>0.040</u>	<u>120</u>	<u>YES</u>
•	<u>0.126</u>	<u>2</u>	<u>YES</u>

Title: Level Shifter - Fabrication Drawing

Author:

Date: Fri Dec 11 10:20:48 2009 UTC

Maximum Dimensions: 2500 mils wide, 5000 mils high



Board outline is the centerline of this 10 mil rectangle - 0,0 to 2500,5000 mils